

## Construction Hoisting Machinery



## Convenient and efficient installation

Less parts, with no slewing mast and tower head.  
Quick joint applied for counter jib and installation platform of driver's cab.  
Unique AG1 antirust grease, making the overall installation faster, time-saving and labor-saving.

## Excellent hoisting performance

With the JOST technology, the hoisting capacity of 40-60 m segment is strengthened, 20% higher than that of the competitor.  
Special reducer.  
Speed is 15%-20% faster than the others.

## Stable and precise positioning

With the frequency conversion control for hoisting and trolleying, its brake is stable without small impact.  
With the unique ZRCV control technology for slewing, it is featured by strong wind resistance capacity and reversing operation.  
With the ant speed positioning technology, its speed can be down to 5 mm/S and its positioning is more accurate.

## High efficiency

High hoisting speed: Taking T7530 as an example, the hoisting speed can reach 145 m/min, which is much higher than the industry average speed of 120 m/min.  
With the unique ZRCV slewing control and ant speed positioning technology, it has stable operation and accurate positioning.  
Easy to install: the application of the JOST technology reduces the usage of the structural components, and the use of quick installation platform and AG1 antirust grease makes installation time-saving and labor-saving.

## Safety

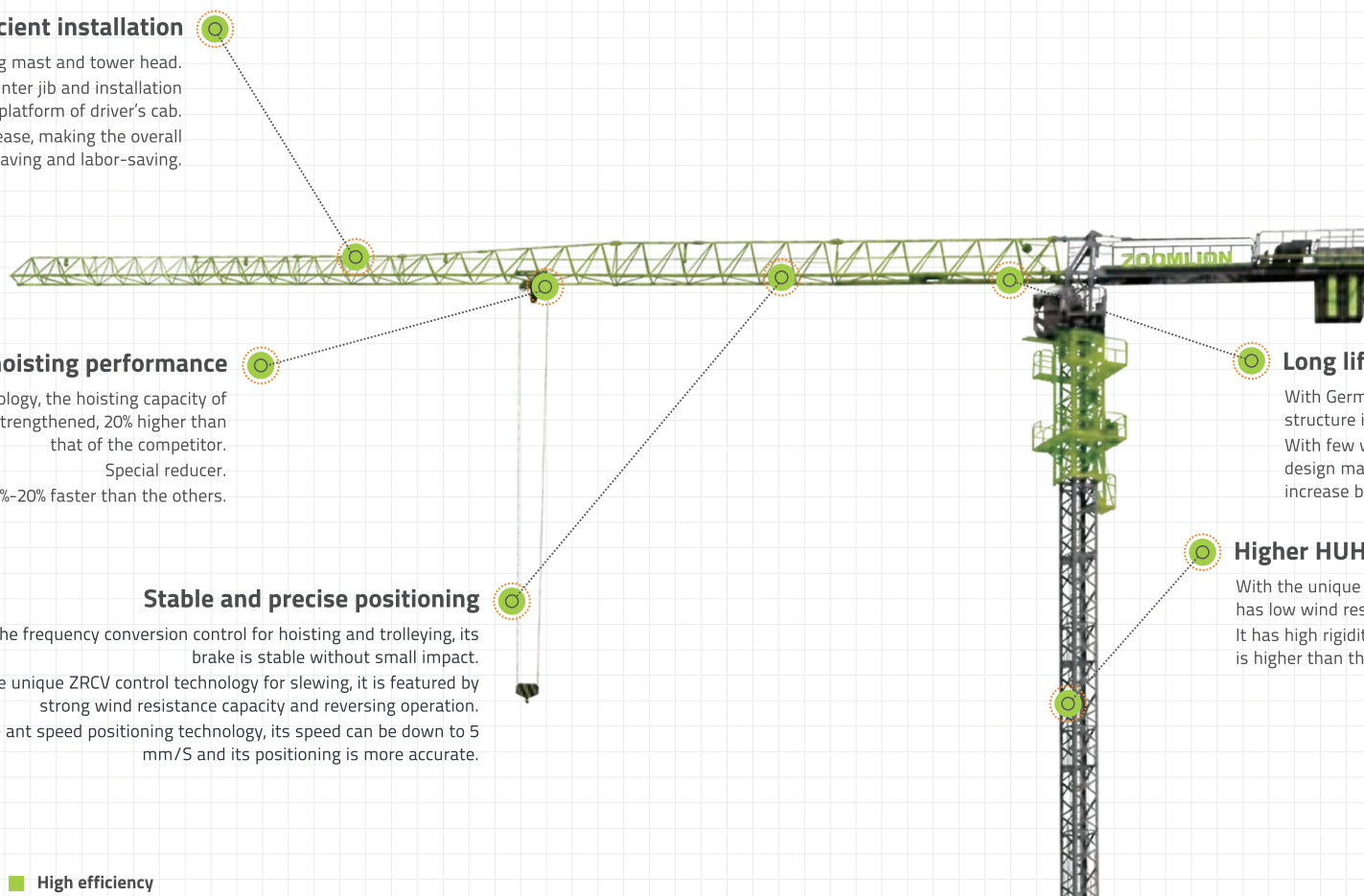
With the JOST technology, its structure is simplified and the connection points and risk sources are reduced. With the rabbit tower body, it has higher rigidity and higher stability.  
With the standard TSM system, it can monitor the operation state on site; with the Internet technology and mobile APP, information such as maintenance reminder and fault alarm will be pushed to realize the remote control. (ONLY USED IN CHINA)

## Long life

With German JOST technology, its structure is under uniform stress.  
With few weld seams and smooth design makes, its using time increase by 100%.

## Higher HUH

With the unique rabbit tower section, it has low wind resistance.  
It has high rigidity, and its independence is higher than that of other towers.



**ZOOMLION Hammerhead Tower Crane****Efficient use**

With wide voltage contactor, it can be operated at 50% of rated voltage.

**High dependability**

It passes the dependability test for more than 10,000 working cycles through strengthening the materials and selecting reliable accessories, first failure is free time more secured.

**Higher safety with double protections**

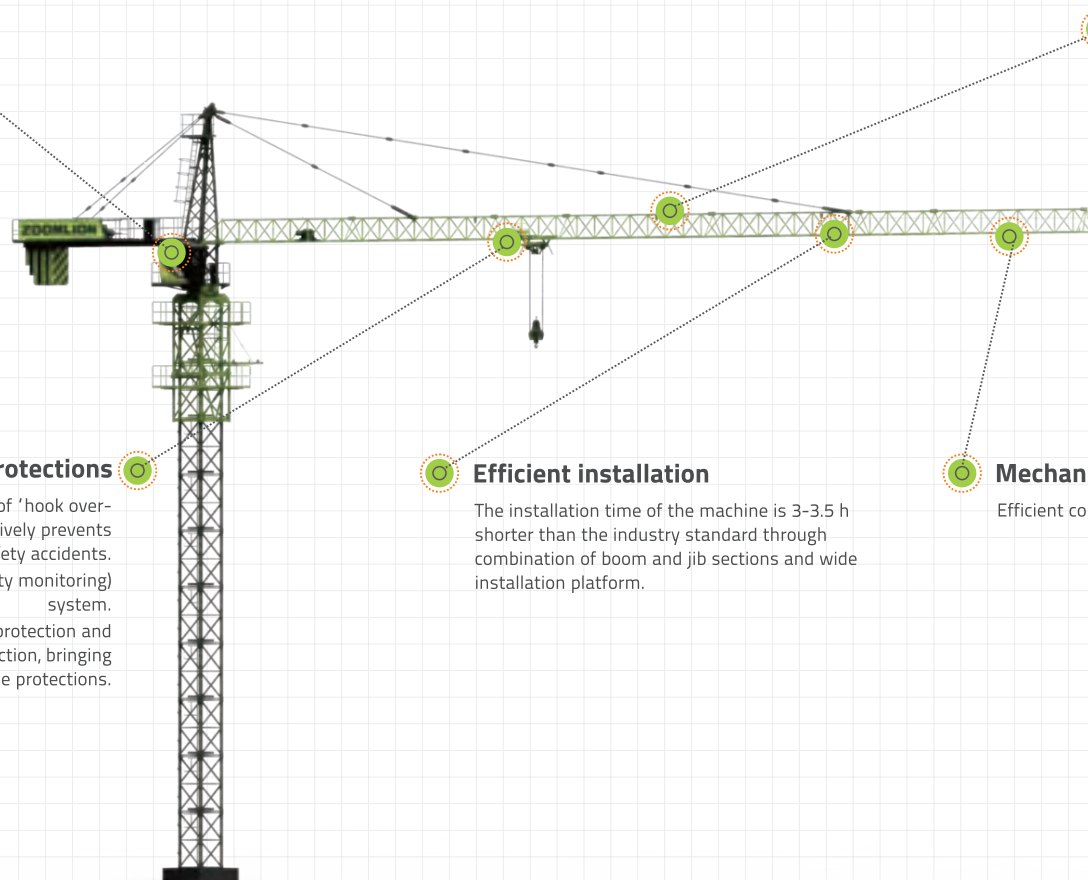
The national proprietary technology of "hook over-hoisting anti-drop protection" effectively prevents major safety accidents. It is equipped with the TSM (tower safety monitoring) system. It is equipped with the electronic limit protection and limiting stopper anti-disassembly function, bringing higher safety with double protections.

**Efficient installation**

The installation time of the machine is 3-3.5 h shorter than the industry standard through combination of boom and jib sections and wide installation platform.

**Mechanism operation speed is increased by 20%**

Efficient compound action without speed decrease.

**Safety**

The national proprietary technology of "hook over-hoisting anti-drop protection" effectively prevents major safety accidents. It is equipped with the TSM (tower safety monitoring) system. It is equipped with the electronic limit protection and limiting stopper anti-disassembly function, bringing higher safety with double protections.

**High efficiency**

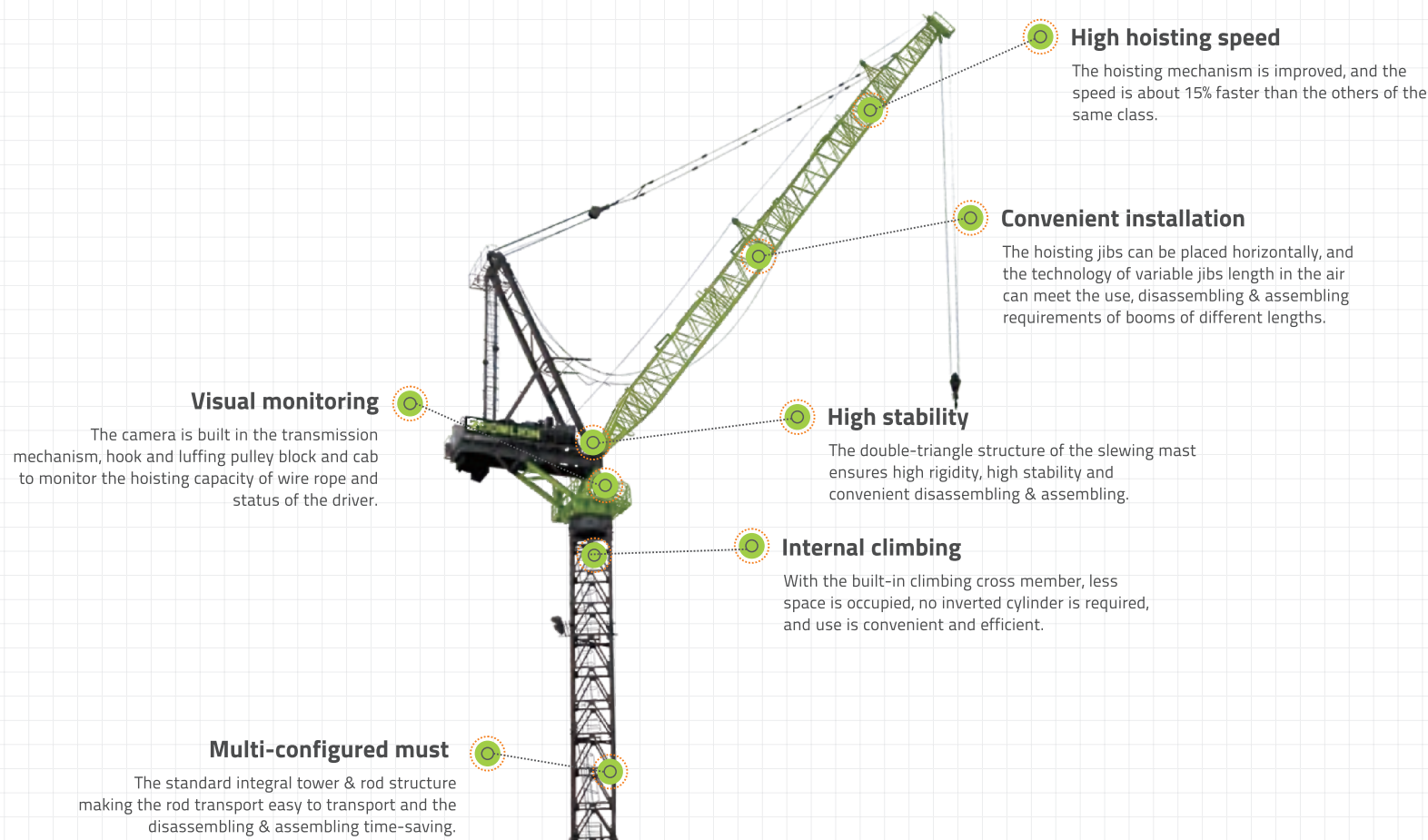
The installation time of the machine is 3-3.5 h shorter than that of the competitors through combination of boom and jib sections and quick installation platform. With wide voltage contactor, Zoomlion hammerhead tower crane can be operated at a low voltage down to 50% of rated voltage, while the competitors can be operated only when the voltage is higher than 80% of rated voltage.

**High dependability**

It passes the dependability test for more than 10,000 working cycles through strengthening the materials and selecting reliable accessories, and the time to first failure is more secure.

**Intelligent**

The customer can get the real-time working condition, fault alarm and maintenance reminder of the tower crane at the mobile phone, carry out remote update and upgrade of electric control program, and realize the integrated management of equipment, personnel and maintenance through installing the remote management system (TRM). (only used in China)



#### ■ Excellent hoisting performance

The hoisting performance of the jib in all lengths is higher than that of the luffing-jib tower crane of the same class in the industry, and the jib has the maximum hoisting capacity in its all lengths.

#### ■ Multiple configurations

There are a variety of jib length combinations to meet the requirements of different working conditions. The integral of tower body and rod structure allows a larger space for selection; the maintenance auxiliary device provides both the manual derrick and the electric derrick.

#### ■ Strengthened transmission

The adoption of the fence type drum technology with double-broken line grooves enables the rope to be arranged regularly and extends the service life of the rope. The hoisting inching speed technology allows a better low speed positioning performance.

All the three operation mechanisms are adopted with the frequency conversion control technology, providing smooth operation, high positioning accuracy and convenient operation.



## ZOOMLION Construction Hoist

### Manual/automatic operating system

It can realize free manual/automatic switching, thus ensuring double protections. It can reduce frequent inching operations and impact as well as extend the component life.

### High worksite adaptability

The average current is 27% lower than that of the common type.  
The impact on the power grid is minor, with the fault rate reduced by 50%.

### High efficiency and energy-saving

With the high efficiency reducer, its transmission efficiency is up to 95%, with an energy-saving rate of 21%.

### Intelligent

It is equipped with intelligent management system, the remote management technology is applied to perform such functions as one card startup. Identity authentication, state display and fault diagnosis, and the mobile APP enables integrated management of the construction lifter, maintenance and personnel.



### High efficiency and energy-saving

If calculated according to 5 operation hours/lifter and 300 working days every year. The annual electric charge of the ordinary construction lifter is 118,800 yuan, and the reducer lubricating oil shall be replaced 17 times throughout the service life. For the energy-saving construction lifter represented by SC200/200EB, the annual electric charge is only 93,600 yuan, and the reducer lubricating oil shall be replaced only once throughout the service life.

### Comfortable operation

It is designed with automatic leveling function, thus reducing the labor intensity of the operator and ensuring easier operation; it is equipped with free manual/automatic switching, thus ensuring double protections and more reliable operation. The operation structure can reduce frequent inching operations and impact as well as extend the component life.